

Introduction to the BSBB: “Bridge Street Botany & Biodiversity”

On January 11th, David gave an overview of our plans for “Bridge Street Botany & Biodiversity” (BSBB), a new Natural Sciences group being established at St Clement’s. The talk discussed projects already underway in the ECLAS, CCF and EIP programmes at St Clement’s, as well as ideas for the new Linnean Lecture Series and the new Biodiversity Hub, soon to be established at St Clement’s.

The slides below summarize the talk and outline some ideas that were discussed at the meeting.

One of our aims is to use the churchyard garden as a place of learning for budding botanists – some from the congregation, some from our local school, and some experts and friends – expanding this for those interested, through talks and visits to Botanical Gardens, some well beyond Cambridge.

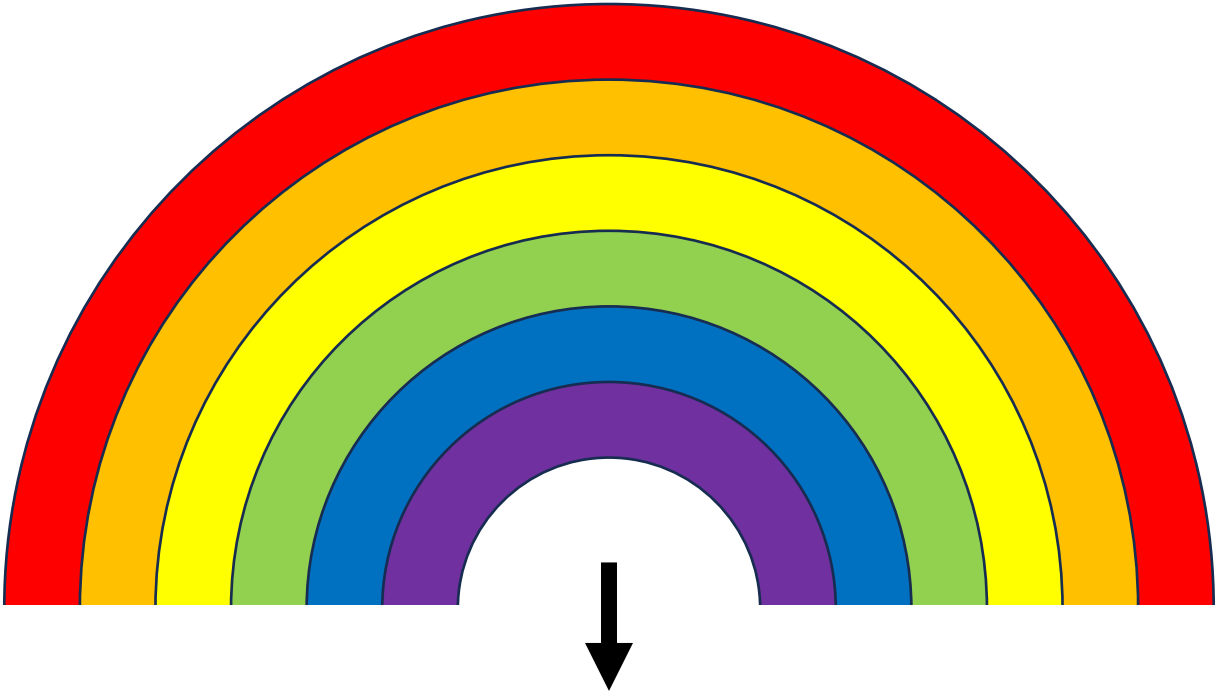
This was the “kick-off” meeting. It will be followed by a series of other talks and outings as the BSBB expands.

There were over thirty attendees, including members of the Wildlife Trust BCN, University Botanic Garden, and the LMB, as well as members of the St Clement’s congregation, and some of our friends and neighbours.

A central role of the BSBB is to inspire and enthuse nature lovers of all ages. One of the ways we will do this is through a drop-in Saturday Morning Club, to be held from 09.00 to 12.00 at St Clement’s, open to all with an interest in the Natural Sciences.

Do come and say hello!

Ideas

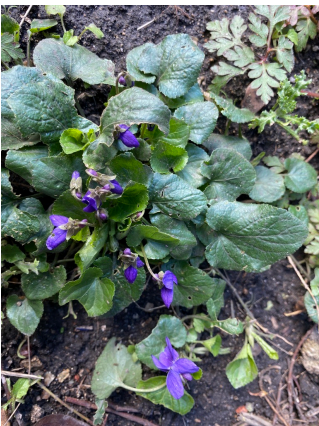


Congregation



Donate a Plant
Tend a Plant
Observe a Plant

Mary

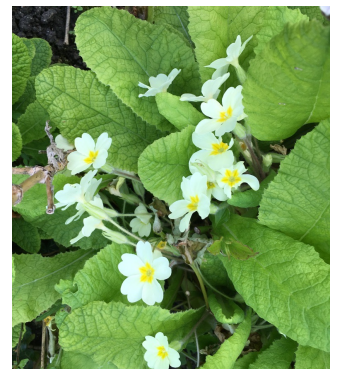


Libby

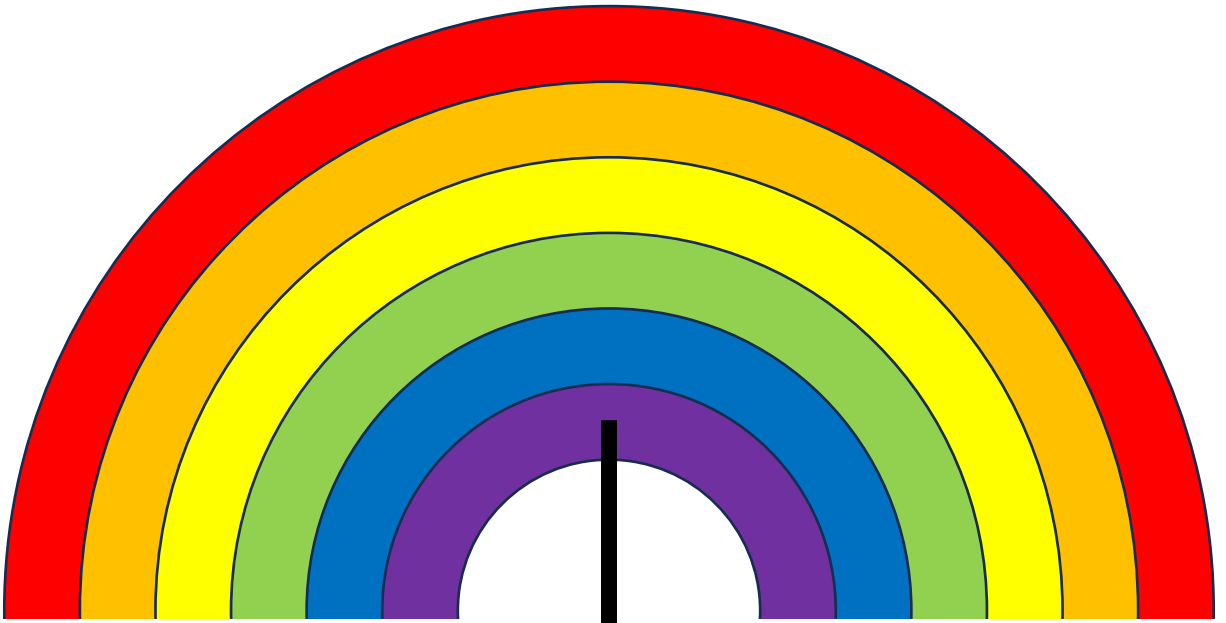


Ann

Lorna & David



Ideas



Neighbours & Congregation



Gardening

John



David

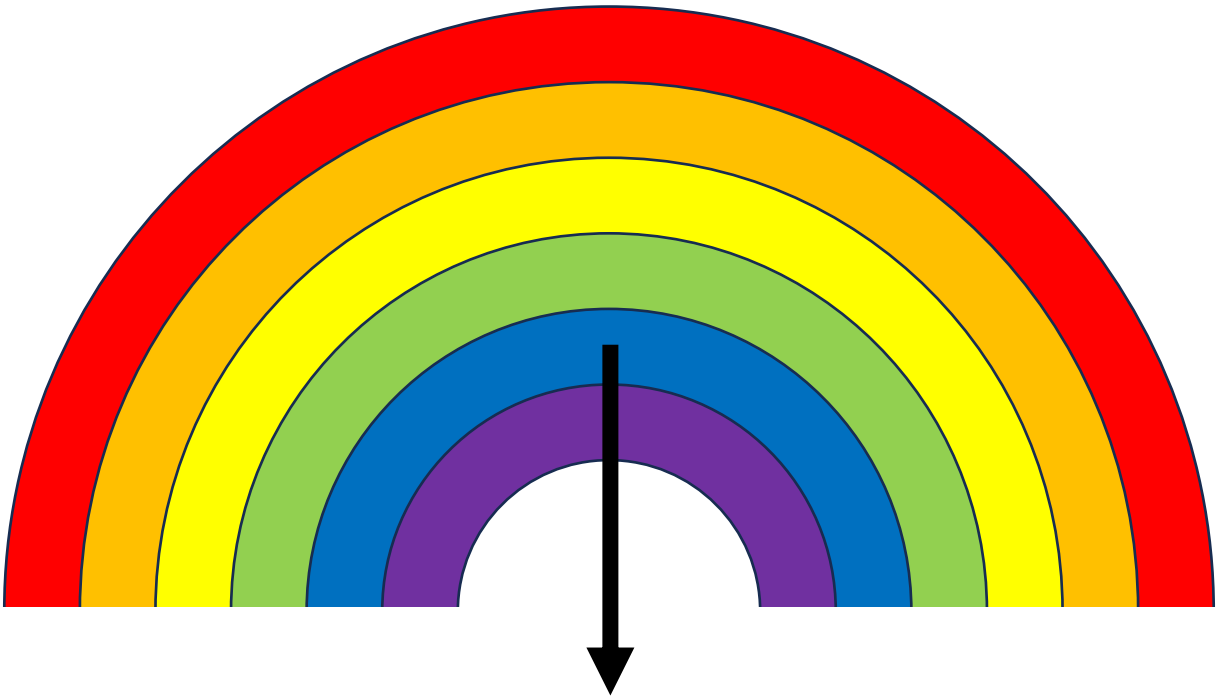


Ana



Keeping Portugal Place pristine

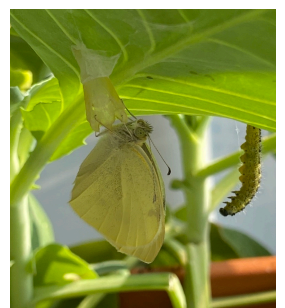
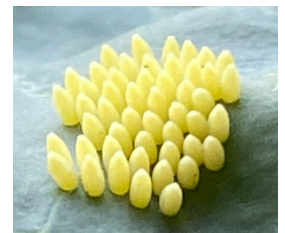
Ideas



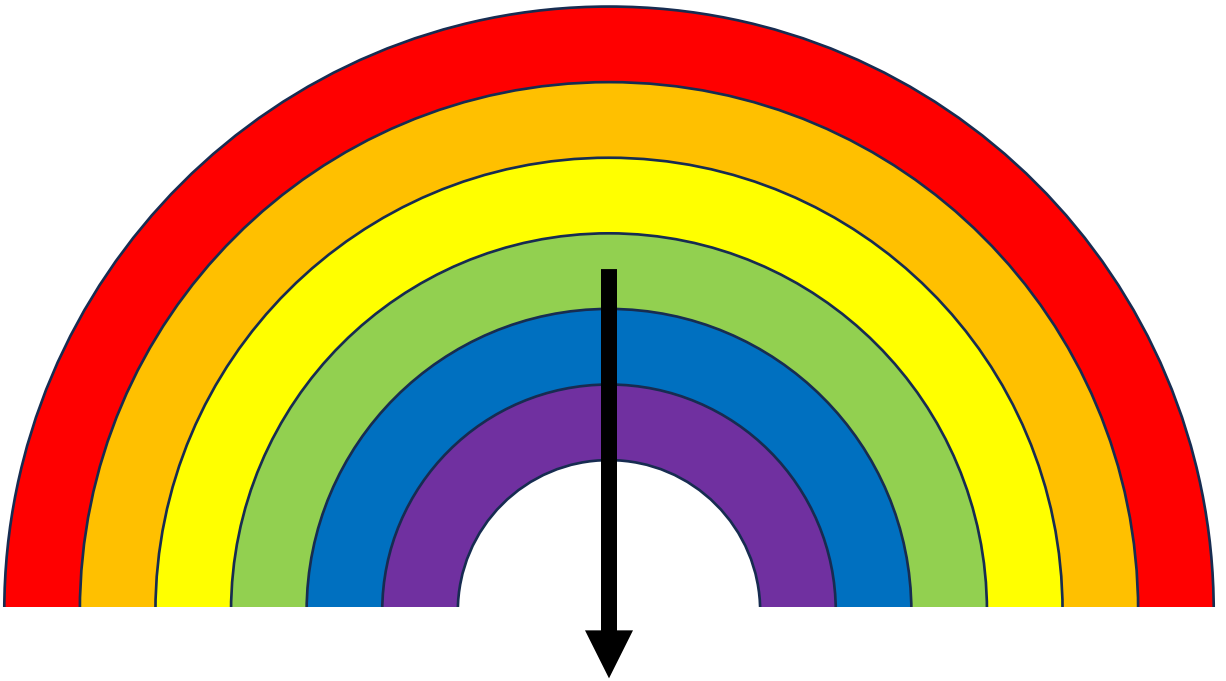
Schools



Insects Birds Plants



Ideas



Garden Tours



Docwra Manor



UK

Klosterneuburg



Europe Beyond

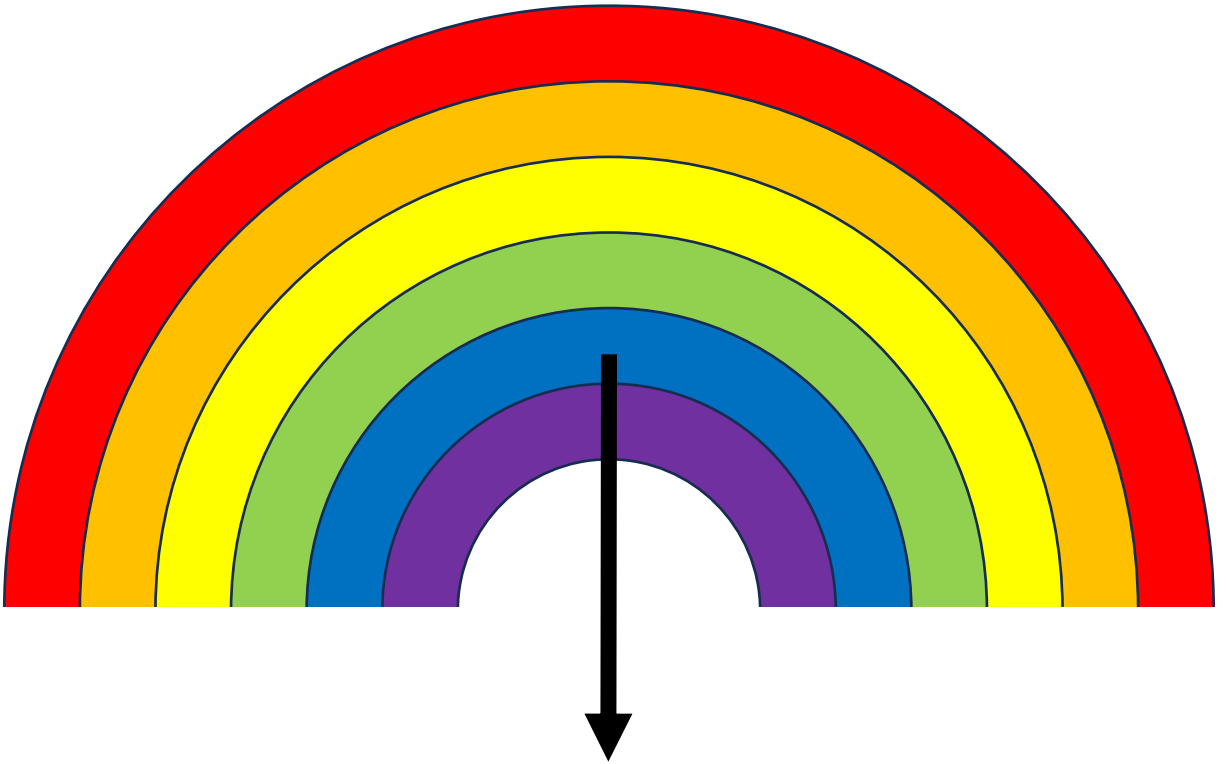


Madingley Hall



Kirstenbosch

Ideas



College Gardeners

Magdalene



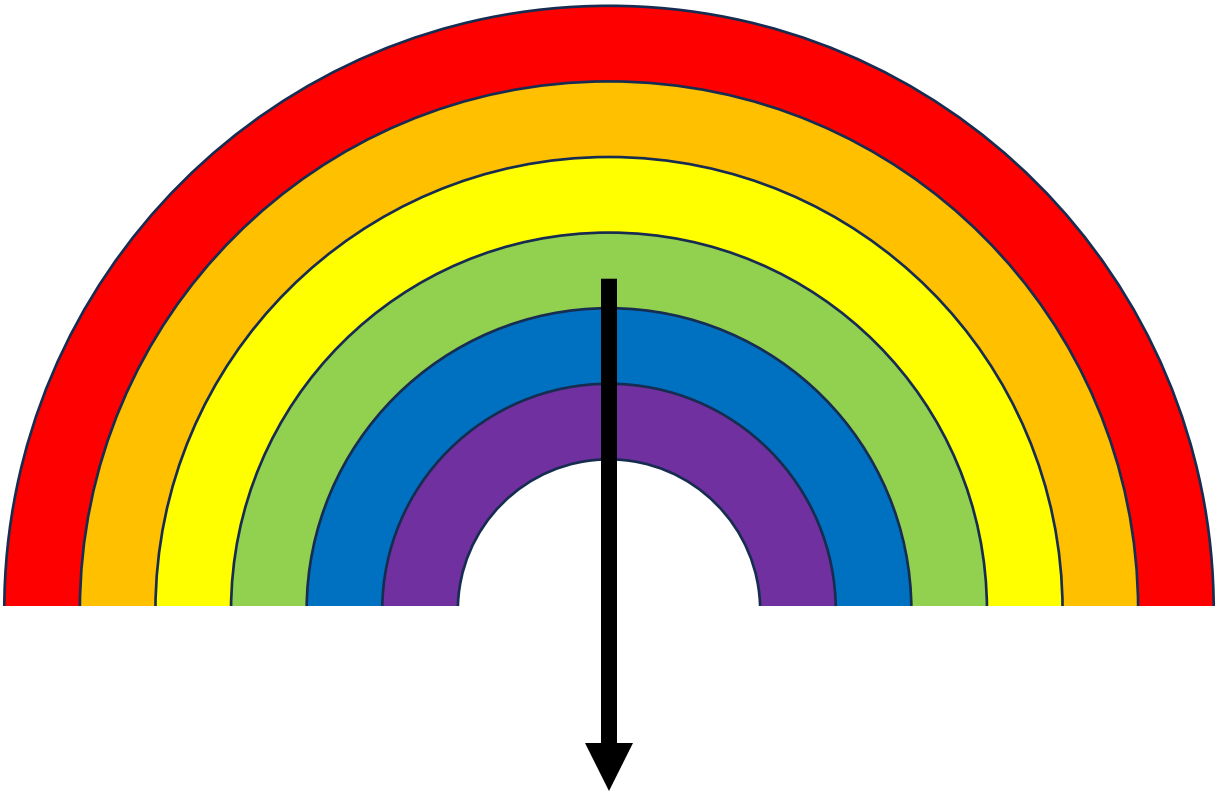
St John's



Gonville & Caius



Ideas



Botanic Gardens

Geneva



Milan



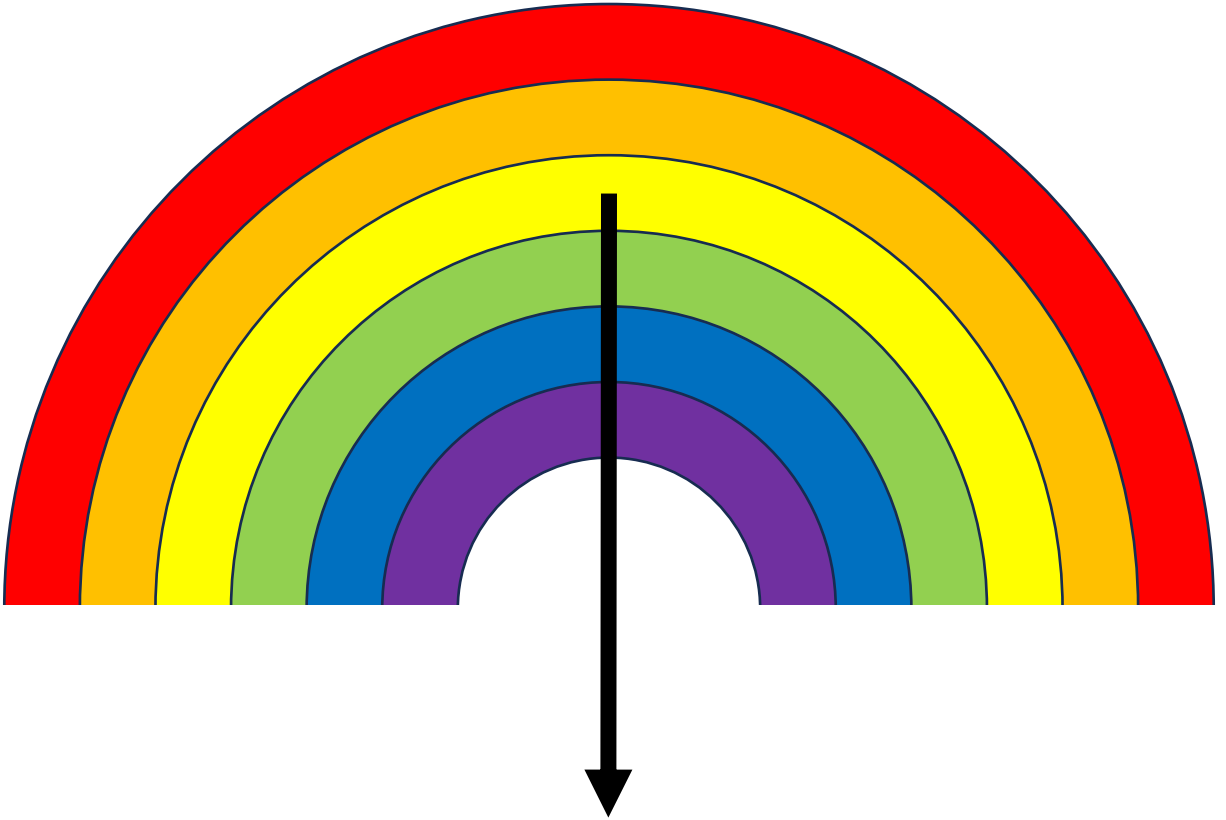
Leiden



Bordeaux



Ideas



Neighbouring Churchyards

St Peter's



The Ascension Burial Ground



St Giles'



Mill Road Cemetery



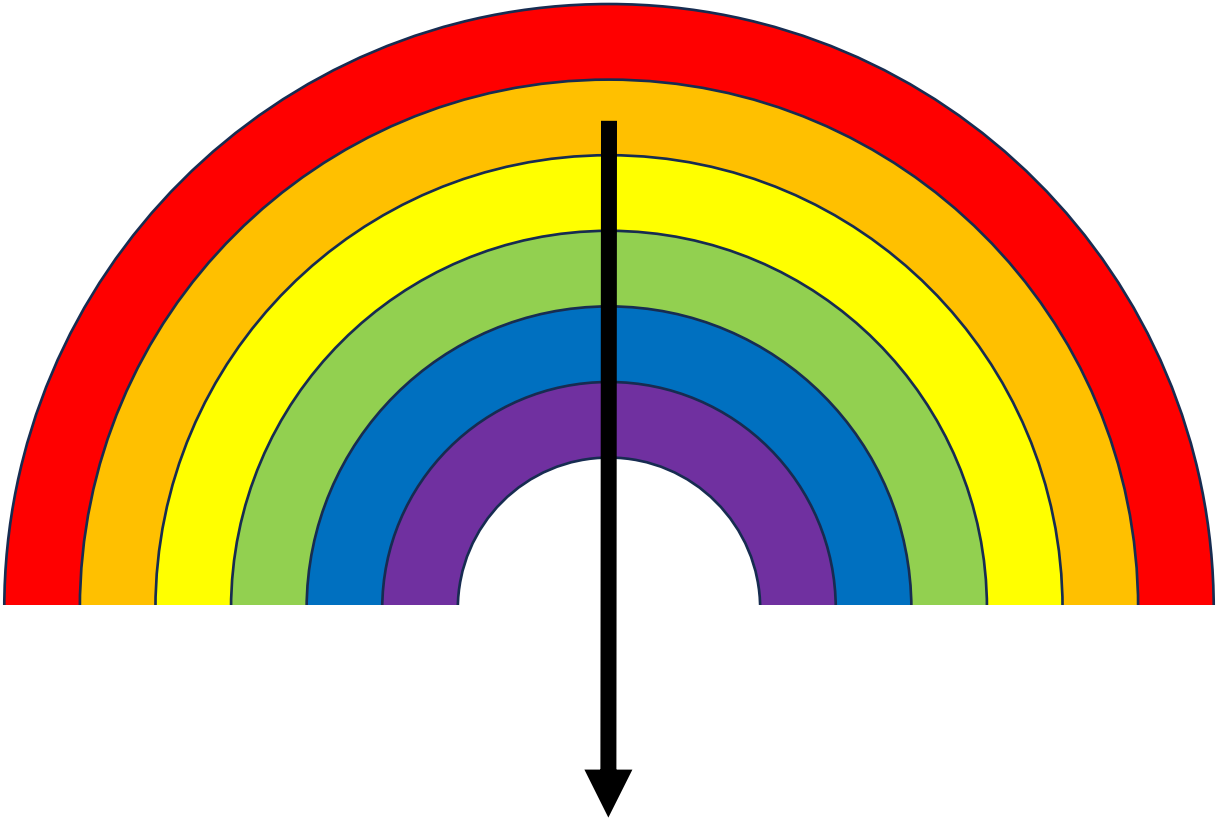
Histon Road Cemetery



Diana Cook (BCN)



Ideas

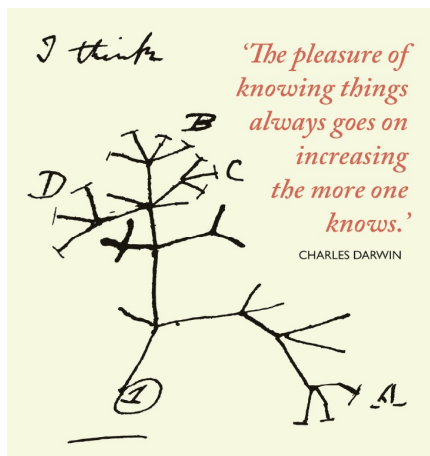


Botany & Biodiversity Organisations & Learning

Carl Linnaeus



Darwin Tree of Life



Wildlife Trusts



The Linnean Society

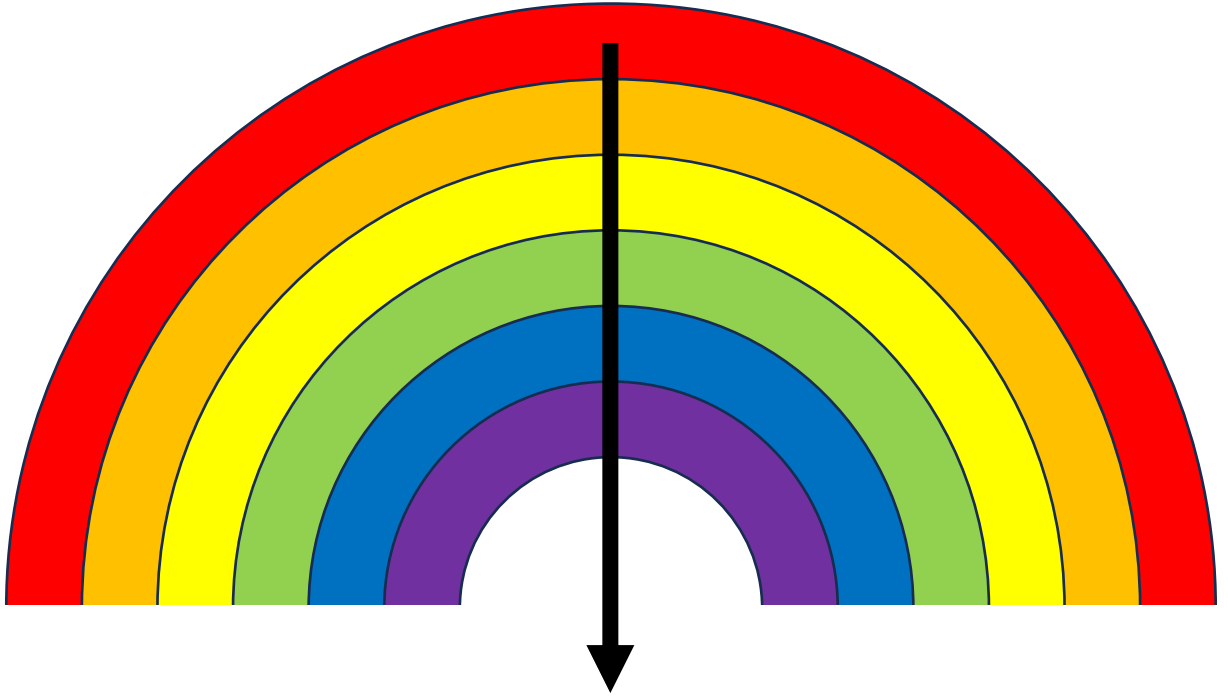


University Botanic Garden



NGS

Ideas



Plant Science & Molecular Biology

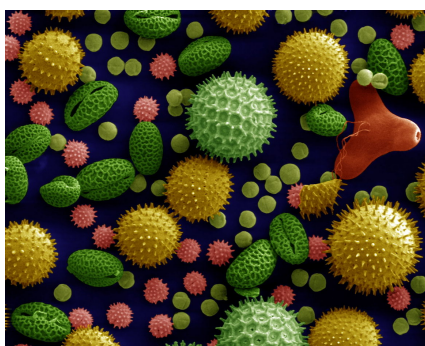
Wellcome Trust Genome Campus



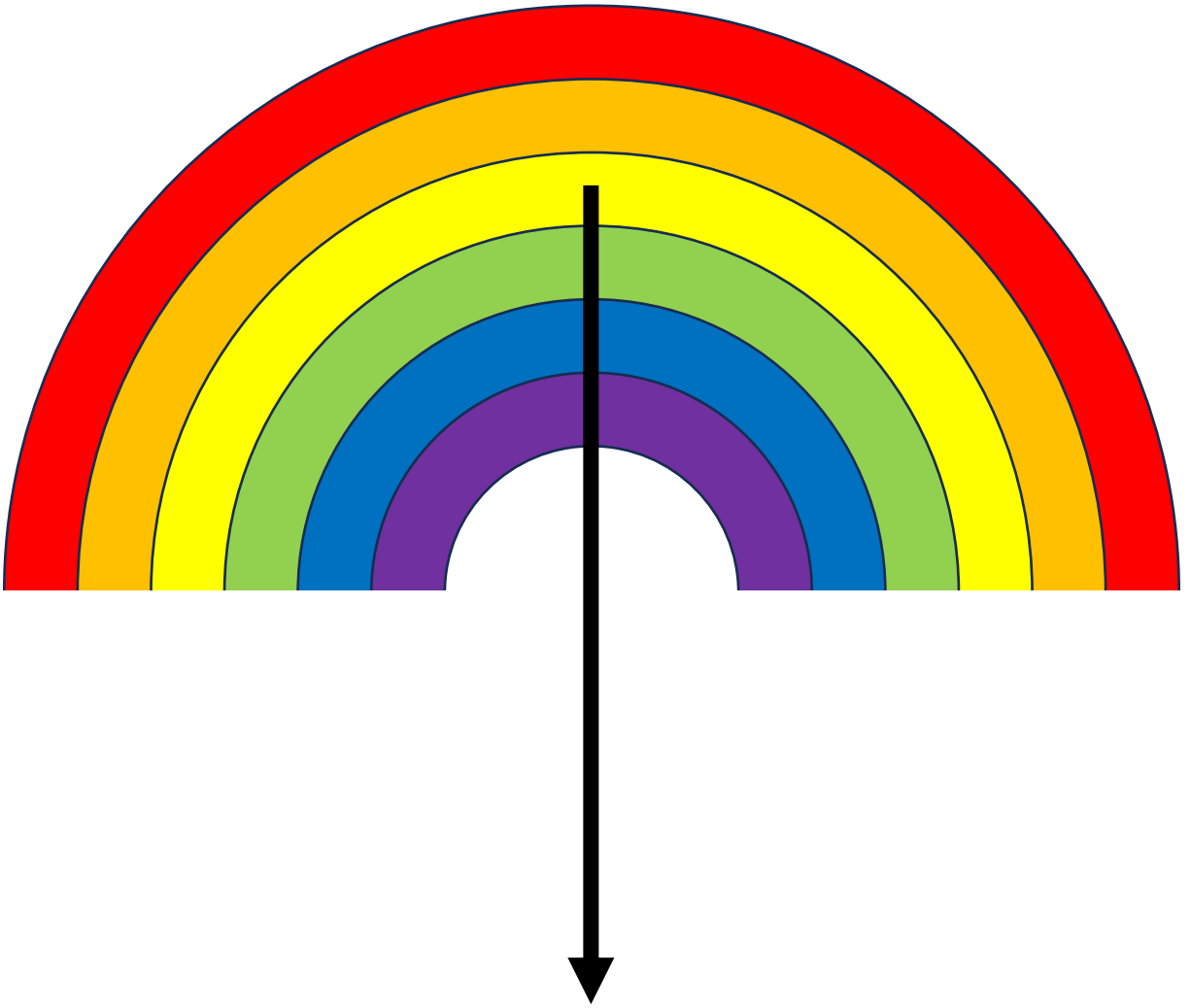
MRC LMB



Pollination Project with the Earlham Institute in Norwich



Summary



Drop-in Saturday Morning Hub

Monthly BSBB Conversations

Adopt-a-Plant

Garden Visits

The Mini-Lab

Pollination Project