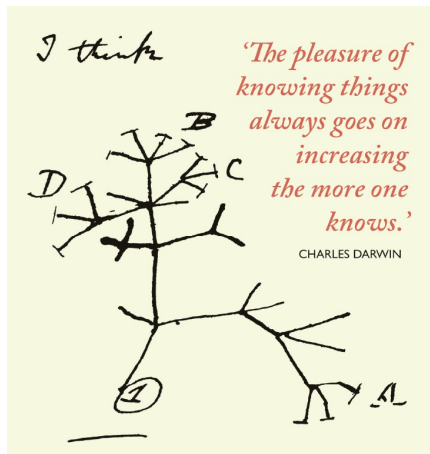


# Expand Your Knowledge

One of the major aims of establishing the Biodiversity Hub at St Clement's is to provide a platform to meet scientists actively involved in environmental research. Cambridge is an excellent place for this – surrounded by top-notch scientists, one can explore global biodiversity at several levels, from molecular biology to the properties of entire ecosystems.

We are developing a series of talks and conversations – the Linnean Lectures - in which local speakers will be invited to give their views on the future of biodiversity on our planet. We hope to involve scientists from the Wellcome Trust's Darwin Tree of Life Project at Hinxton, as well as leading Cambridge scientists in Plant Sciences and Zoology.

The first talk will be given by Brian Eversham, CEO of the regional Wildlife Trust. For more about what's going on at the Wildlife Trust, see their blogs: <https://www.wildlifebcn.org/blog>.



Although our own experimental facilities are limited, we are planning to work in collaboration with scientists at the Earlham Institute in Norwich to learn about pollination biology, an area that links plant diversity and insect survival. For more information on their work, see <https://www.earlham.ac.uk/the-bee-trail>



Other talks will focus on rainforest biodiversity and plant molecular taxonomy.